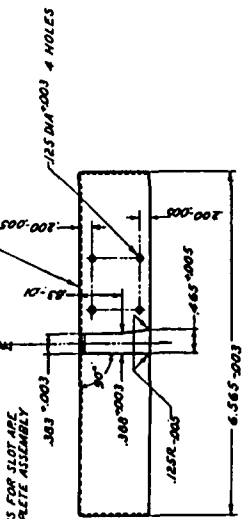


HEAT TREATMENT & FINAL FINISH

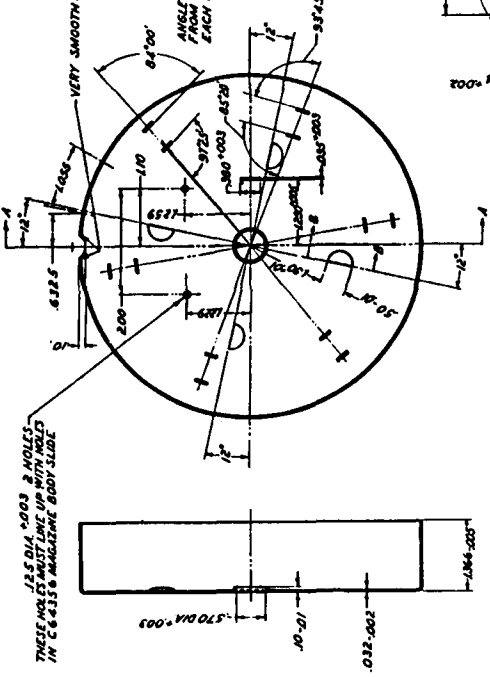
Y.P.	
Y.S.	
EL3	
HL3	
RECL	
SCCL	

NOTE: SURFACE MUST BE .04 TO .04 INCH CONVEX CURVATURE AT THE MID HOLE

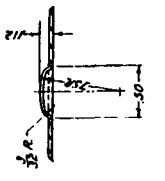


NOTE: DIMENSIONS FOR SLOT ARE AFTER COMPLETE ASSEMBLY

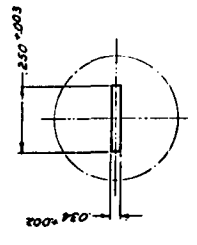
NOTE: 125 DIA +.003 2 HOLES THESE HOLES MUST LINE UP WITH HOLE IN C-6415 & MAGNETIC BODY SLIDE



SECTION A-A

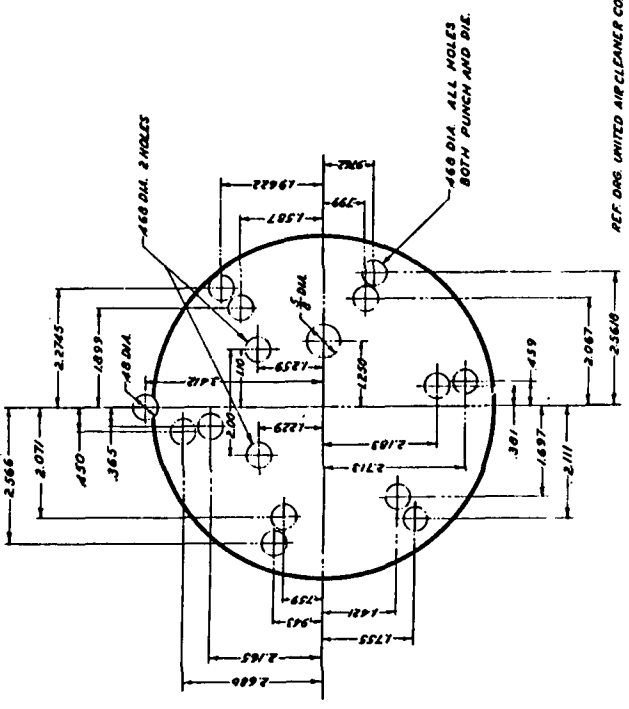


SECTION BB SCALE 1/2



DETAIL VIEW OF SLOT SCALE 1/2

THESE DIMENSIONS ARE DIE DIMENSIONS FOR JIG BORING OPERATION



6535502
 BODY, MAGAZINE
 STEEL W/3 HOLES
 MANUFACTURING COMPONENT

REF. DRG. UNITED AIRCRAFTER CO. 20025
 OCTOBER 20, 1947
 REVISIONS

REV.	BY	DATE	DESCRIPTION
1			
2			
3			
4			
5			
6			
7			
8			
9			
10			
11			
12			
13			
14			
15			
16			
17			
18			
19			
20			
21			
22			
23			
24			
25			
26			
27			
28			
29			
30			
31			
32			
33			
34			
35			
36			
37			
38			
39			
40			
41			
42			
43			
44			
45			
46			
47			
48			
49			
50			
51			
52			
53			
54			
55			
56			
57			
58			
59			
60			
61			
62			
63			
64			
65			
66			
67			
68			
69			
70			
71			
72			
73			
74			
75			
76			
77			
78			
79			
80			
81			
82			
83			
84			
85			
86			
87			
88			
89			
90			
91			
92			
93			
94			
95			
96			
97			
98			
99			
100			

SCALE 1/2
 0635502

TOLERANCE IS ALLOWED ON ALL DIMENSIONS UNLESS OTHERWISE SPECIFIED.

ORDNANCE DEPT., U.S.A.
 SUPER-SERIES D35502